

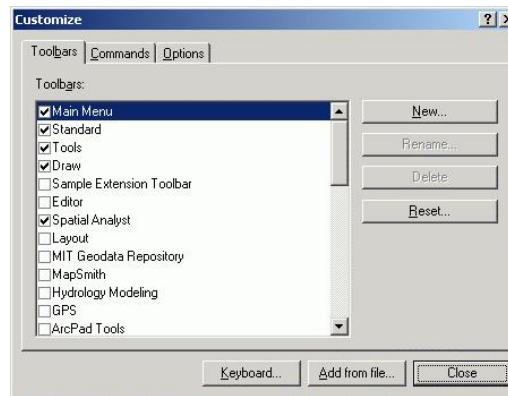
Installing the Profiler Toolbar (profiler.dll)

1. Download and register the Profiler.dll file

- Place the profiler.dll in your C:\Program Files\ArcGIS\bin folder, or an alternate folder if you prefer (one option is to create the folder C:\Program Files\ArcGIS_Stream_Profiler). REMEMBER WHERE YOU PUT IT. If you install a new version you will need to overwrite this file. To avoid problems you MUST always register the dll from the same directory.
- Open 3 Windows Explorers. In the first window, change to the folder where you stored the new DLL. In the second, change to the C:\WINDOWS\system32 folder. In the third, change to the C:\Program Files\ArcGIS\bin folder.
- Now you need to drag the DLL and drop it onto the regsvr32.exe icon in the Windows\System32 folder. Next, drag the DLL onto the regcat.exe icon in Arcgis\bin folder. Click on the Arcmap checkbox then click Register.

2. Install the profiler extension in ArcMap

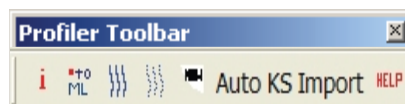
- Open ArcGIS. Click on Tools and Customize. You should see a form like this:



- Click on Add from File (the middle button on the bottom of the form). This allows you to add a dll that has been registered with Windows and with ArcGIS. The dll has been written to interact directly with ArcGIS. Navigate to the folder where you saved profiler.dll, highlight profiler.dll then click on open
- Once you do, you should see a form something like this:



- These are the subroutines, forms, and toolbar that make up the new profiler tool. Click on the Profiler Toolbar in the list of toolbars. You should see the toolbar:



3. The best practice for installing a new, improved version of the profiler toolbar when released is to completely remove any memory of the old version before installing the new one as listed above. The procedure is:
 - a. In ArcMap Tools->Customize-> uncheck the profiler toolbar
 - b. Close ArcMap
 - c. Double click on:
C:\Program Files\ArcGIS\Bin\categories.exe
 - d. Scroll down to ESRI Mx CommandBars, expand
 1. search for Profiler1* and remove all objects related to profiler toolbar - should just be the toolbar (should be at the end of the list)
 - e. Move to ESRI Mx Commands, expand
 1. search for profiler1* and remove all objects related to profiler toolbar - several functions (should be at the end of the list)
 - f. Reinstall the new Profiler.dll as described above